

HOW FAR I'LL GO

MOANA,
PUA,
HEI HEI:

See the

Fm7 Eb/G Abm6 Bb^{sus} Abm6 /F

This system contains the first four measures of the piece. It features a vocal line with a whole rest in the first measure, followed by a melodic line starting in the second measure. The piano accompaniment consists of a steady eighth-note bass line in the left hand and a more complex melody in the right hand. Chord symbols are placed above the piano part: Fm7, Eb/G, Abm6, Bb^{sus}, and Abm6 /F.

5 HEI HEI: PUA, HEI HEI:

light as it shines on the sea? It's blind - ing. But no one

E^b Bb^{sus}4 B^b(add4)

f

This system contains measures 5 through 6. The vocal line begins with the lyrics "HEI HEI:" and "PUA, HEI HEI:". The piano accompaniment continues with the eighth-note bass line and a melody of chords. Chord symbols are E^b, Bb^{sus}4, and B^b(add4). A dynamic marking of *f* is present at the start of the piano part.

7 MOANA:

knows how deep it goes! And it

Cm Cm9 /B^b Ab^Δ Ab⁹

This system contains measures 7 through 8. The vocal line begins with the lyrics "MOANA:" and "knows how deep it goes! And it". The piano accompaniment continues with the eighth-note bass line and a melody of chords. Chord symbols are Cm, Cm9, /B^b, Ab^Δ, and Ab⁹.

9

seems like it's call-ing out to me, so come find me, and let me

E^b B^b_{sus4} $B^b(add4)$

11

know... What's be - yond that line? Will I cross that line? The

Cm $Cm9$ $/B^b$ A^b_m A^b_m6

sub. mp

MOANA, PUA,
HEI HEI:

13

line where the sky meets the sea, it calls me! And no one

E B_{sus4} $B(add4)$

ff

MOANA:
MOANA, PUA,
HEI HEI:

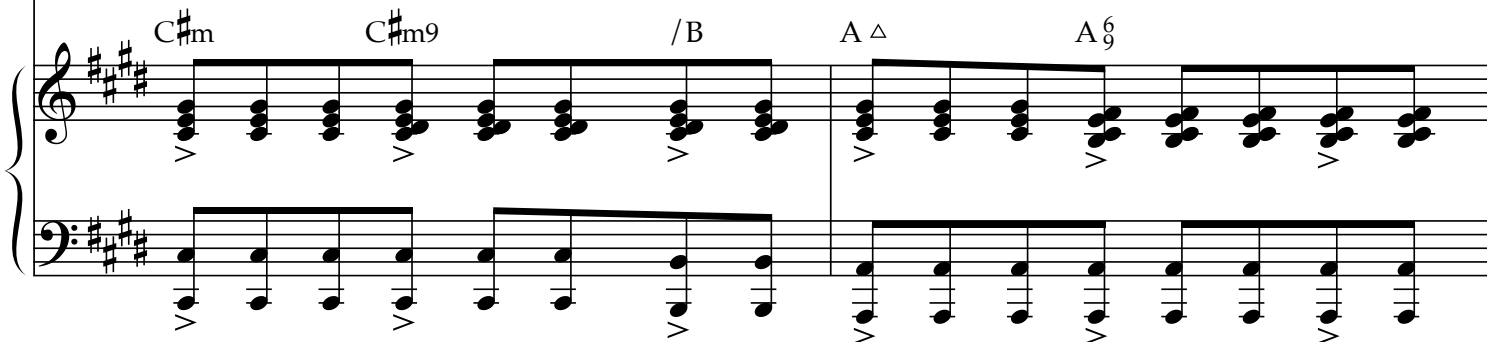
MOANA:

15



knows _____ how far it goes! _____ If the

C#m C#m9 /B A Δ A 6 9



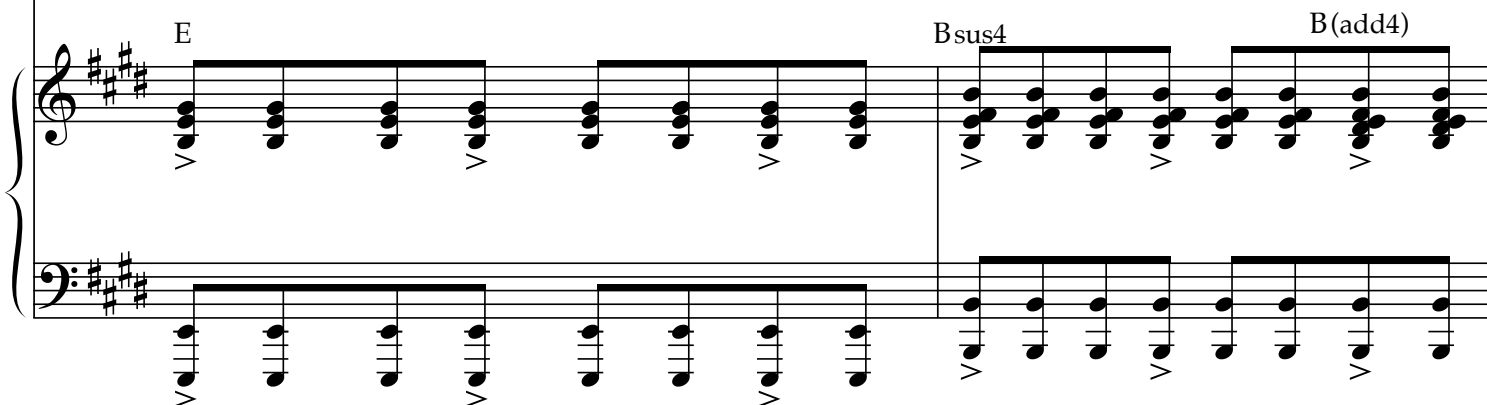
MOANA, PUA,
HEI HEI:

17

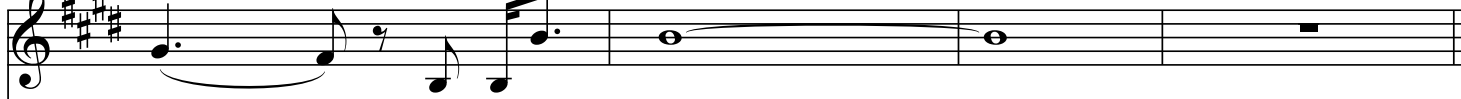


wind in my sail on the sea stays be - hind _____ me, one day I'll

E Bsus4 B(add4)

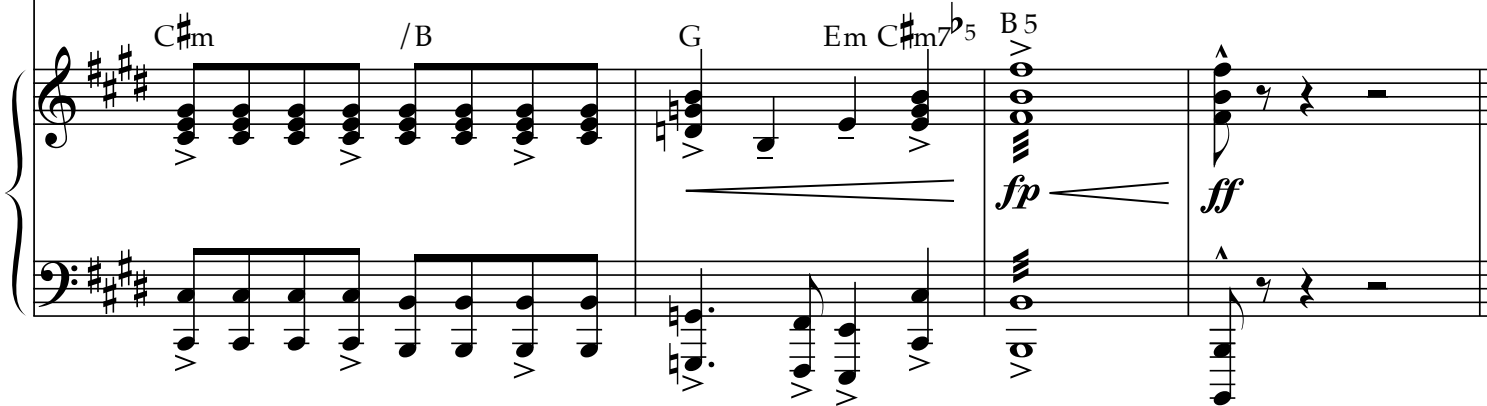


19



know _____ how far I'll go! _____

C#m /B G Em C#m7 5 B5



fp *ff*